

689 FIFTH AVENUE
NEW YORK, PLAZA DISTRICT



VORNADO
REALTY TRUST

© 2021 VORNADO REALTY TRUST
888 SEVENTH AVENUE, NEW YORK, NY 10019
PHONE: 212.894.7000

WWW.VNO.COM

689 FIFTH AVENUE

NEW YORK, PLAZA DISTRICT

OVERVIEW & FEATURES

LOCATION

The building is located on the northeast corner of 54th Street and 5th Avenue.

YEAR BUILT

1926

ARCHITECT

Warren & Wetmore

RENOVATION

Vornado recently completed a ground floor retail storefront replacement which features limestone and granite facade with bronze storefront framing and insulated glass display windows. The building will also undergo a capital improvement program featuring a new office lobby, refurbished elevator cabs and a new distinguished exterior lighting program.

POINTS OF ENTRY

Entrance on 54th Street between Madison & 5th Avenue

BUILDING SIZE

Approximately 99,000 SF

FLOORS

15

FLOOR SIZES

2,500 SF to 8,000 SF

FLOORS LOADS

120 lbs per SF

CEILING HEIGHTS

12'-0"

ELCTRICITY

8 watts per USF

EMERGENCY LIGHTING AND POWER

None

ELEVATORS

3 Passenger Cars

2 Freight Cars

HVAC

Monday through Friday 8:00AM to 6:00PM

SECURITY

24 hours, 7 days a week

SUSTAINABILITY

LEED Gold Certified

TELECOM



689 FIFTH AVENUE

NEW YORK, PLAZA DISTRICT

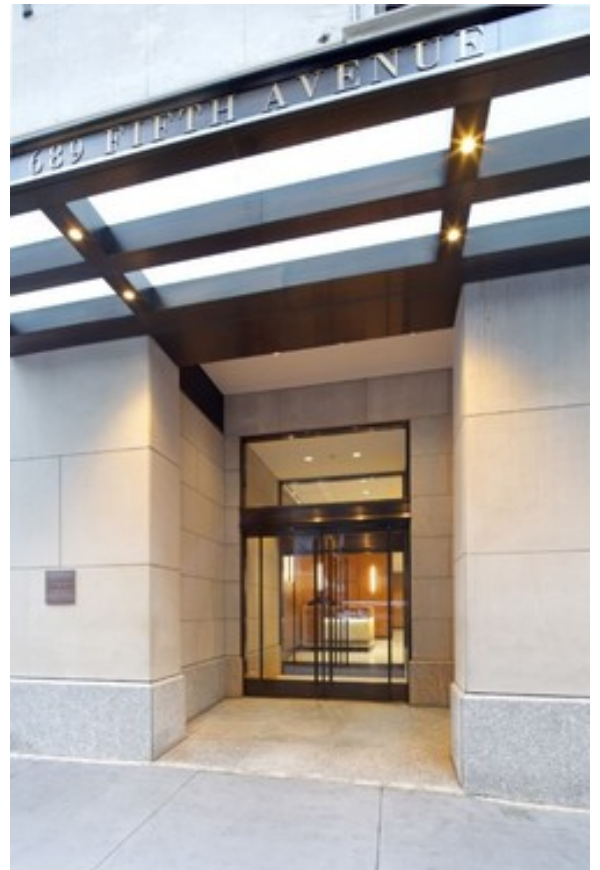
Verizon, TWC, Pilot

TENANT PROFILE

Major Tenants Include:

Office

- Brunello Cucinelli
- Yamaha



689 FIFTH AVENUE NEW YORK, PLAZA DISTRICT

AREA INFO & MAP

